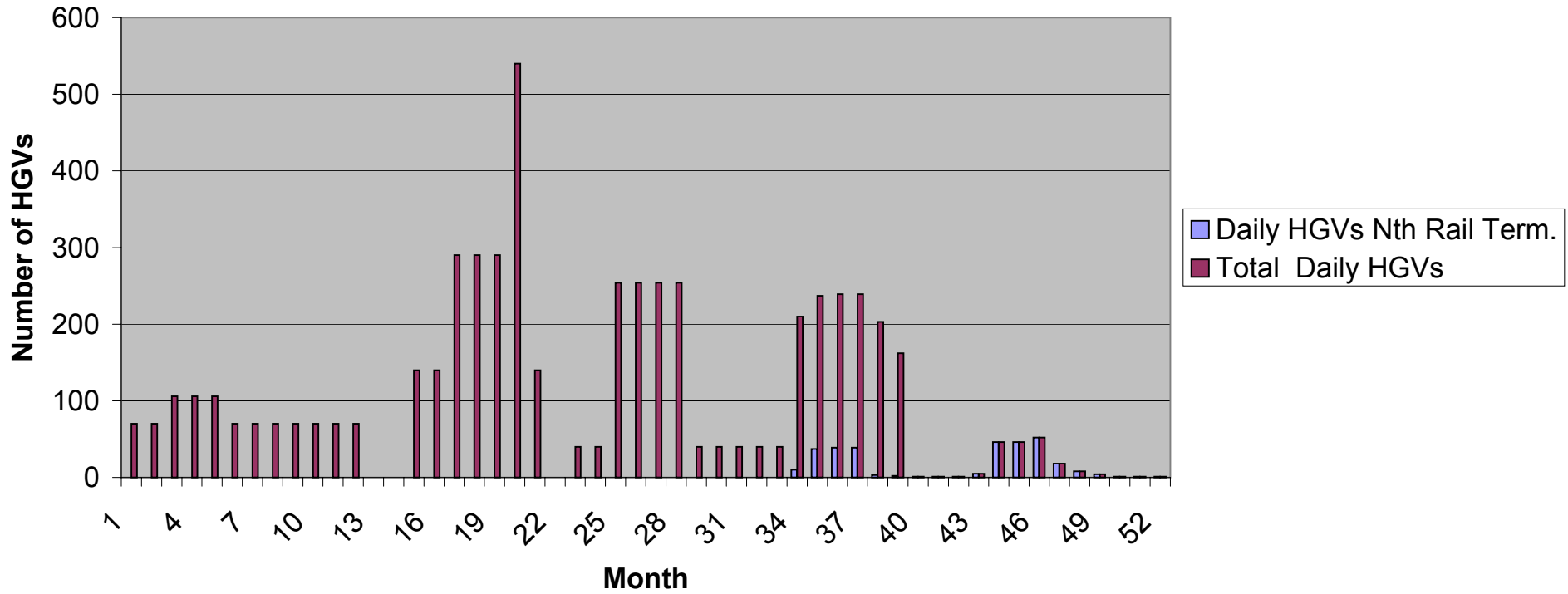


Figure 5.1 Generated Construction Traffic



Demolition	Phase		Month	Daily HGVs		Total Daily HGVs	
	Construction			Nth Rail Term.	Daily HGVs		
	1	1a / 1b		1	0	70	
				2	0	70	
				3	0	106	
				4	0	106	
				5	0	106	
				6	0	70	
				7	0	70	
				8	0	70	
				9	0	70	
				10	0	70	
				11	0	70	
				12	0	70	
				13	0	0	
				14	0	0	
				15	0	140	
				16	0	140	
	2			17	0	290	
				18	0	290	
		2		19	0	290	
				20	0	540	
				21	0	140	
				22	0	0	
				23	0	40	
				24	0	40	
				25	0	254	
				26	0	254	
				27	0	254	
				28	0	254	
				29	0	40	
				30	0	40	
				31	0	40	
				32	0	40	
				33	0	40	[Worst case week for Rail Works:]
				34	10	210	29-Jan
				35	37	237	26-Feb
				36	39	239	12-Mar
				37	39	239	09-Apr
				38	3	203	07-May
				39	2	162	04-Jun
				40	1	1	09-Jul
				41	1	1	20-Aug
				42	1	1	24-Sep
				43	5	5	08-Oct
				44	46	46	26-Nov
				45	46	46	03-Dec
				46	52	52	07-Jan
				47	18	18	04-Feb
				48	8	8	03-Mar
				49	4	4	14-Apr
				50	1	1	05-May
				51	1	1	02-Jun
				52	1	1	07-Jul
				53	0	0	08-Aug

A14(T) Traffic Flows Between:	2003 Survey								2005 Growthed								2008 Check						Growth Factor (HGVs):	AM	PM
	0700 hours				1600 hours				0700 hours				1600 hours				0700 hours			1600 hours					
	HGVs	Others	Total	%HGV	HGVs	Others	Total	%HGV	HGVs	Others	Total	% inc	HGVs	Others	Total	% inc	HGVs	Others	Total	HGVs	Others	Total			
Trinity Ave. and Candlet Rd.	277	726	1003	28	400	1037	1437	28	313	888	1201	2	452	1250	1702	1	376	1201	1577	543	1655	2198	1.063	1.063	
Candlet Rd and Kirton Rd	293	818	1111	26	430	1950	2380	18	331	1001	1332	2	486	2351	2837	1	398	1354	1751	584	3112	3696			1.106
A14(T) / A12 / A1156 and A14 / A1189	416	1088	1504	28	625	2500	3125	20	470	1331	1801	1	706	3014	3720	1	565	1801	2365	848	3990	4838			
A14(T) / A1189 and the Orwell Bridge	451	1349	1800	25	588	2922	3510	17	510	1650	2160	1	664	3523	4187	1	612	2232	2845	798	4663	5461			
A14(T) / A137 and A14(T) / A12 / A1214	398	1039	1437	28	598	2702	3300	18	450	1271	1721	1	676	3258	3933	1	540	1719	2260	812	4312	5124			