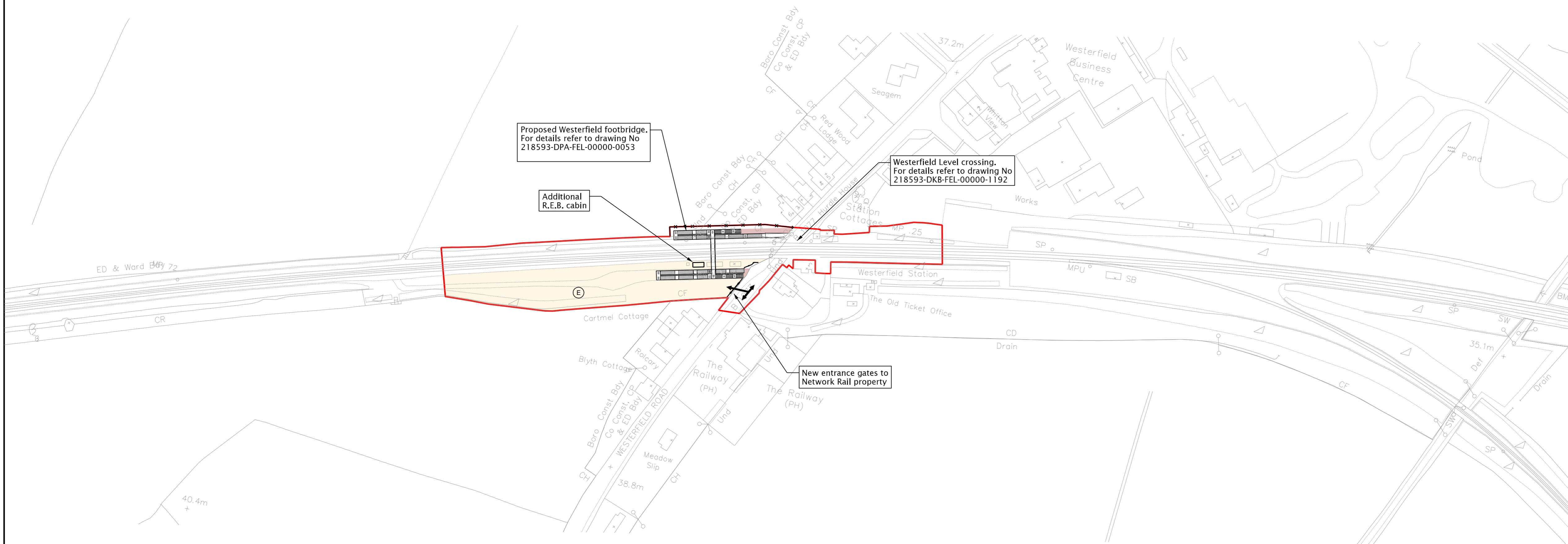


Notes
1. Levels are in Metres and refer to Ordnance Datum Newlyn.



- Legend
- Proposed railway corridor boundary fence
 - Limit of works
 - Item to be removed
 - Proposed track
 - Temporary access (walkway, path or road)
 - Land not to be used for the purposes of the works and not subject to acquisition
 - Land to remain clear of construction site work and material storage during the works
 - Permanent access (walkway, path or road)
 - Worksites : see usage legend for details
 - Construction access points with direction of works traffic movement
 - Temporary direction of one way traffic on public highway

- Worksite Usage Legend
- (A) Haul road for all terrain construction vehicles.
 - (B) Area to enable all terrain construction vehicles to turn around.
 - (C) Area to enable all terrain construction vehicles to turn around and fabrication of track turnouts.
 - (D) Area to enable all terrain construction vehicles to turn around and temporary stockpile spoil.
 - (E) Area suitable for:
Earth moving equipment turnback / parking
Spoil storage
Road lorry loading
Road lorry parking / queuing
Site cabins
Equipment storage
Car parking
Road lorry washdown area

Rev	Date	Drawn	Description	Chk'd	App'd
A	08/12/05	CAT	Improvement Order	NJW	RDC

Mott MacDonald

St Anne House
Wellesley Road
Croydon, CR9 2UL
England

Tel +44 (0)20 8774 2000
Fax +44 (0)20 8681 5706
Web www.mottmac.com

Port of Felixstowe

ENGINEERING DEPARTMENT
PORT OF FELIXSTOWE
THE DOCK
FELIXSTOWE
SUFFOLK IP11 2JY
TEL: 01394 84000
FAX: 01394 84004

Title
THE FELIXSTOWE BRANCH LINE AND IPSWICH YARD IMPROVEMENT ORDER WESTFIELD JUNCTION - PLANNING GENERAL ARRANGEMENT

Sheet 1 of 1

Designed	N.Welch	08/12/05	Eng. Chk.	A.Southwood	08/12/05
Drawn	M.Catalano	08/12/05	Coordination	-	-
Dwg. Chk.	K.Theobald	08/12/05	Approved	R.Carter	08/12/05
Scale @ A1	Project: 218593		Status		PRE
1:1250		CAD file: 218593-DKB-FEL-00000-1188.dgn			
Drawing no.	218593-DKB-FEL-00000-1188				Rev A