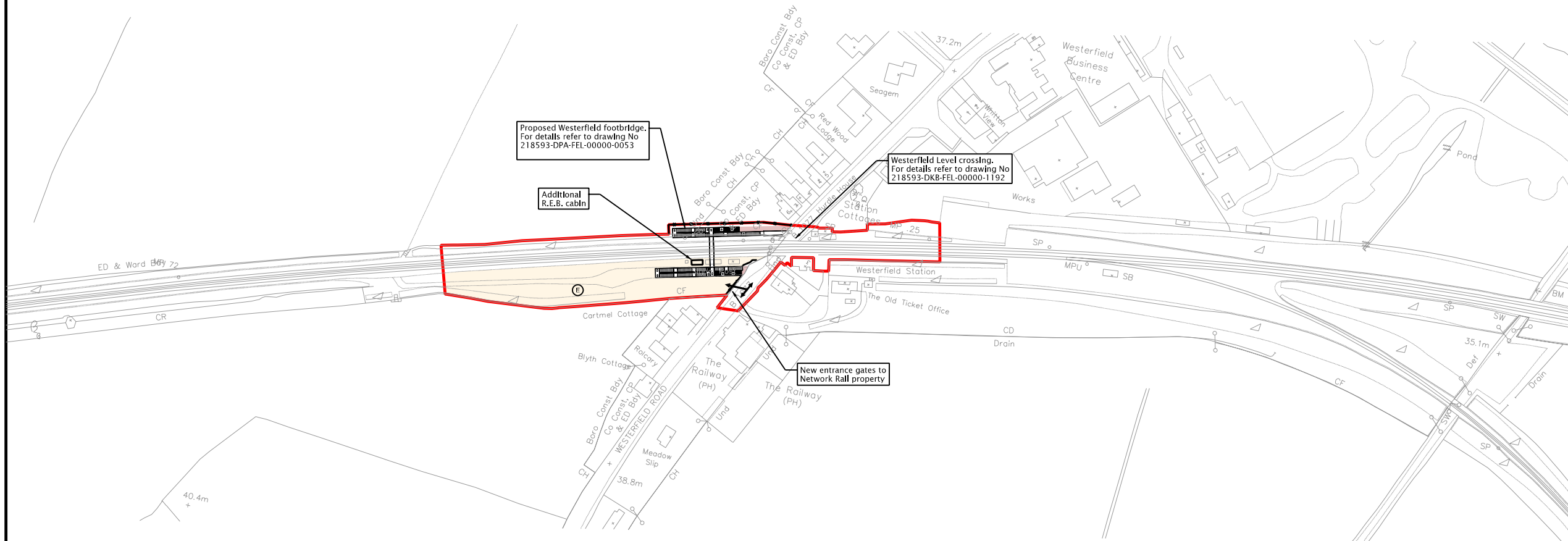


**Notes**

1. Levels are in Metres and refer to Ordnance Datum Newlyn.

- Legend**
- Proposed railway corridor boundary fence
  - Limit of works
  - Item to be removed
  - Proposed track
  - Temporary access (walkway, path or road)
  - Land not to be used for the purposes of the works and not subject to acquisition
  - Land to remain clear of construction site work and material storage during the works
  - Permanent access (walkway, path or road)
  - Worksites : see usage legend for details
  - Construction access points with direction of works traffic movement
  - Temporary direction of one way traffic on public highway

- Worksite Usage Legend**
- Haul road for all terrain construction vehicles.
  - Area to enable all terrain construction vehicles to turn around.
  - Area to enable all terrain construction vehicles to turn around and fabrication of track turnouts.
  - Area to enable all terrain construction vehicles to turn around and temporary stockpile spoil.
  - Area suitable for:  
Earth moving equipment turnback / parking  
Spoil storage  
Road lorry loading  
Road lorry parking / queuing  
Site cabins  
Equipment storage  
Car parking  
Road lorry washdown area



| Rev | Date     | Drawn | Description       | Chk'd | App'd |
|-----|----------|-------|-------------------|-------|-------|
| A   | 08/12/05 | CAT   | Improvement Order | NW    | RDC   |

**Mott MacDonald**

St Anne House  
Wellesley Road  
Croydon, CR9 2UL  
England

Tel +44 (0)20 8774 2000  
Fax +44 (0)20 8681 5706  
Web www.mottmac.com

**Port of Felixstowe**

ENGINEERING DEPARTMENT  
PORT OF FELIXSTOWE  
THE OLD HOUSE  
THE DOCK  
FELIXSTOWE  
SUFFOLK IP11 2JF  
TEL: 01206 80000  
FAX: 01206 80000

**Title**

THE FELIXSTOWE BRANCH LINE  
AND IPSWICH YARD IMPROVEMENT ORDER  
WESTFIELD JUNCTION - PLANNING  
GENERAL ARRANGEMENT

Sheet 1 of 1

|            |   |          |              |             |                           |
|------------|---|----------|--------------|-------------|---------------------------|
| Designed   | N.Welch                                 | 08/12/05 | Eng. Chk.    | A.Southwood | 08/12/05                  |
| Drawn      | M.Catalano                              | 08/12/05 | Coordination | -           | -                         |
| Dwg. Chk.  | K.Theobald                              | 08/12/05 | Approved     | R.Carter    | 08/12/05                  |
| Scale @ A1 | Project: 218593                         |          | Status       |             | PRE                       |
| 1:1250     | CAD file: 218593-DKB-FEL-00000-1188.dgn |          | Drawing no.  |             | 218593-DKB-FEL-00000-1188 |
|            |   |          |              |             | Rev A                     |

DRAWING REFERENCE NUMBER 40601 & 40602.  
REPRODUCED FROM ORDNANCE SURVEY SUPERPLAN  
DATA © CROWN COPYRIGHT 2005.  
ALL RIGHTS RESERVED.  
This document should not be relied on or used in circumstances other than those for which it was originally prepared and for which Mott MacDonald was commissioned.  
Mott MacDonald accepts no responsibility for this document to any other party other than the person by whom it was commissioned.

