



Notes
1. Levels are in Metres and refer to Ordnance Datum Newlyn.

- Legend
- Proposed railway corridor boundary fence
 - Limit of works
 - Item to be removed
 - Proposed track
 - Temporary access (walkway, path or road)
 - Land not to be used for the purposes of the works and not subject to acquisition
 - Land to remain clear of construction site work and material storage during the works
 - Permanent access (walkway, path or road)
 - Worksites : see usage legend for details
 - Construction access points with direction of works traffic movement
 - Temporary direction of one way traffic on public highway

- Worksite Usage Legend
- (A) Haul road for all terrain construction vehicles.
 - (B) Area to enable all terrain construction vehicles to turn around.
 - (C) Area to enable all terrain construction vehicles to turn around and fabrication of track turnouts.
 - (D) Area to enable all terrain construction vehicles to turn around and temporary stockpile spoil.
 - (E) Area suitable for:
Earth moving equipment turnback / parking
Spoil storage
Road lorry loading
Road lorry parking / queuing
Site cabins
Equipment storage
Car parking
Road lorry washdown area

Rev	Date	Drawn	Description	Chk'd	App'd
A	08/12/05	CAT	Improvement Order	NW	RDC

Mott MacDonald

St Anne House
Wellesley Road
Croydon, CR9 2UL
England

Tel +44 (0)20 8774 2000
Fax +44 (0)20 8681 5706
Web www.mottmac.com

Client

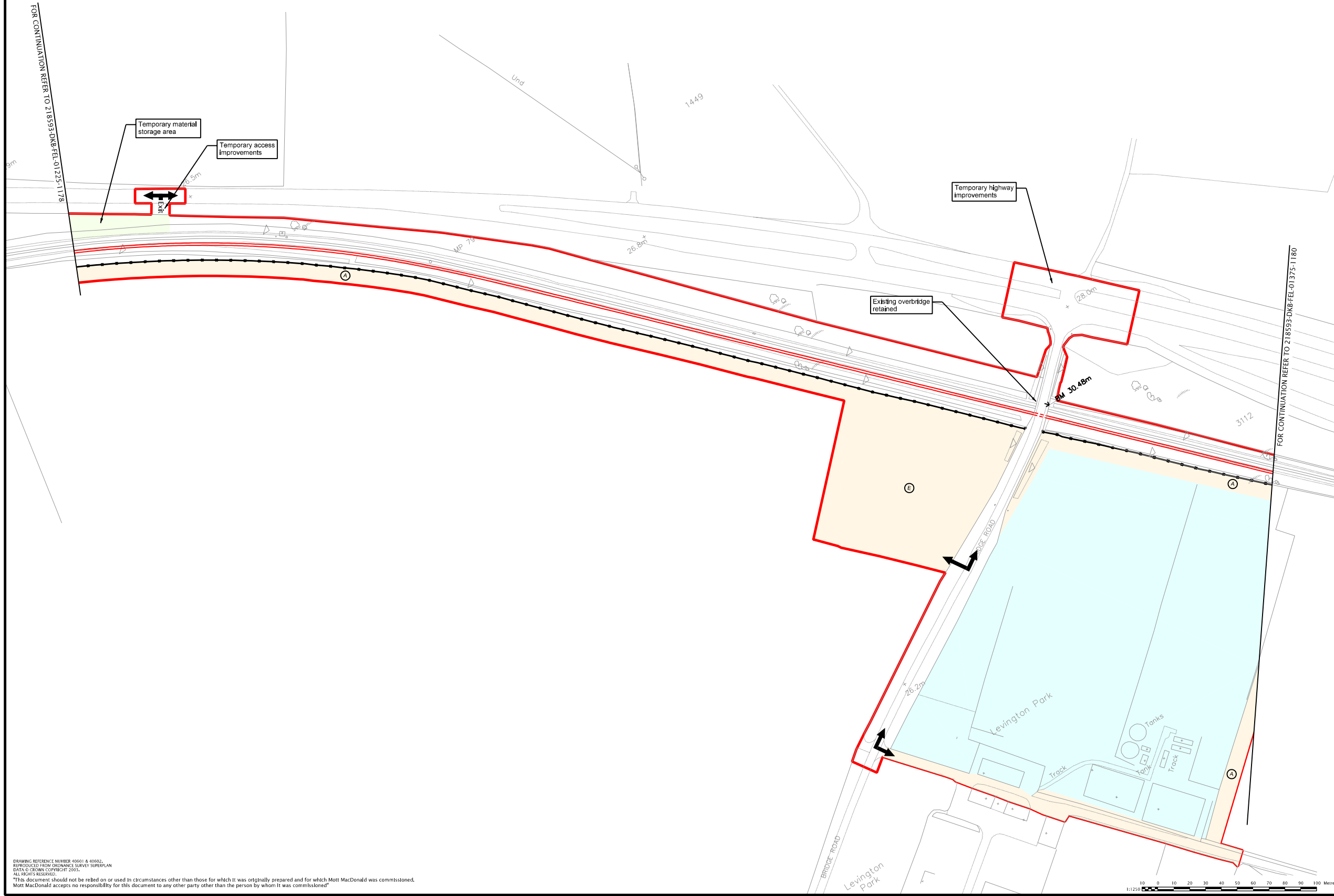
Port of Felixstowe

ENGINEERING DEPARTMENT
PORT OF FELIXSTOWE
THE DOCK
FELIXSTOWE
SUFFOLK IP11 2JF
TEL: 01394 60000
FAX: 01394 60000

Title
**THE FELIXSTOWE BRANCH LINE AND IPSWICH YARD IMPROVEMENT ORDER
BRANCH LINE - PLANNING
GENERAL ARRANGEMENT**

Sheet 2 of 10

Designed	N.Welch	08/12/05	Eng. Chk.	A.Southwood	08/12/05
Drawn	M.Catalano	08/12/05	Coordination	-	-
Dwg. Chk.	K.Theobald	08/12/05	Approved	R.Carter	08/12/05
Scale @ A1	Project: 218593		Status		PRE
1:1250	CAD file: 218593-DKB-FEL-01300-1179.dgn		Drawing no.		218593-DKB-FEL-01300-1179
					Rev A



DRAWING REFERENCE NUMBER 40601 & 40602.
REPRODUCED FROM ORDNANCE SURVEY SUPERPLAN
DATA © CROWN COPYRIGHT 2001.
ALL RIGHTS RESERVED.
This document should not be relied on or used in circumstances other than those for which it was originally prepared and for which Mott MacDonald was commissioned.
Mott MacDonald accepts no responsibility for this document to any other party other than the person by whom it was commissioned.